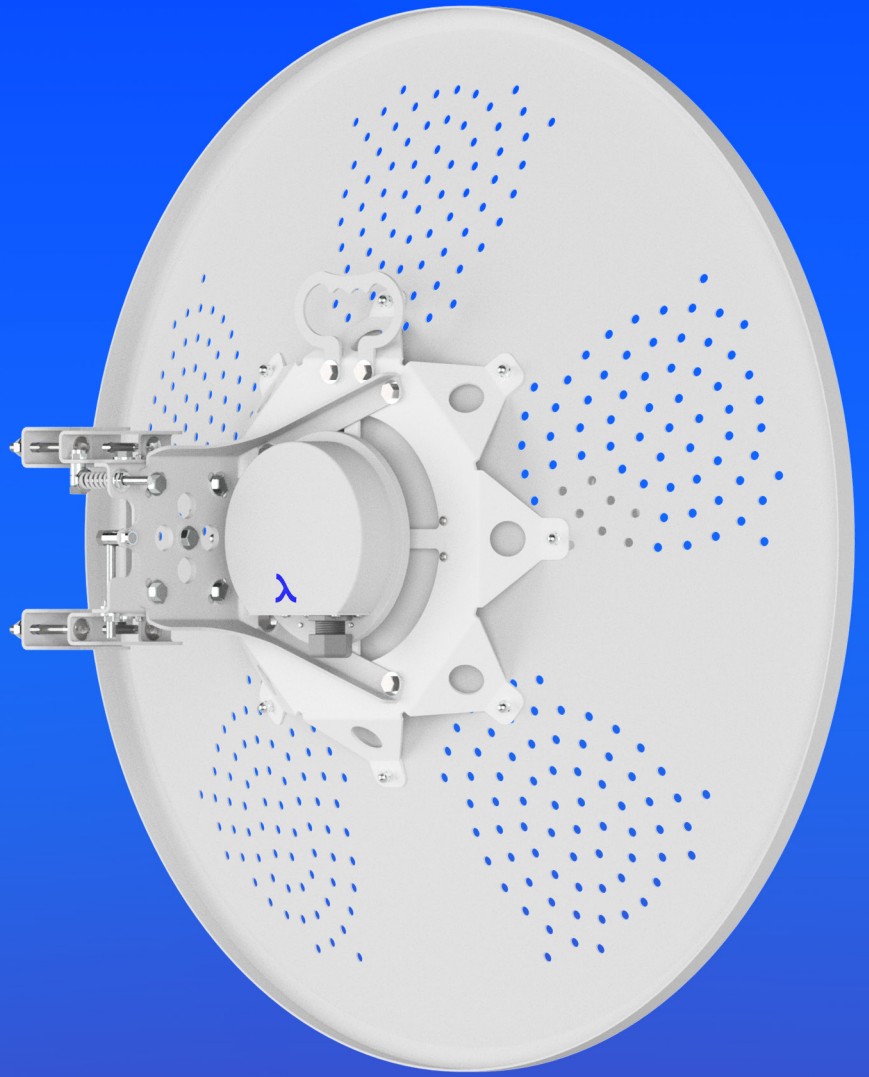


Rayawave

Catalog Version 1.0.4



Stay connected

RAYAWAVE

Introduction

In today's dynamic and technology-driven world, communications and data transmission are rapidly advancing as the backbone of economic and social spheres. In this active environment, telecommunications equipment serves as a gateway for establishing effective communications and facilitating the rapid and precise transfer of information, carrying significant importance.

"RayaWave" is here to fulfill its mission in the realm of telecommunications equipment manufacturing. Our mission revolves around establishing and sustaining data exchange. We take pride in designing and producing equipment that effectively and progressively enables data transmission on a different level.

This commitment to innovation, high quality, and environmental stewardship has guided us to new frontiers in telecommunications equipment. During this journey, we place our confidence not only in cutting edge technologies but also in a dedicated team of enthusiastic experts and visionary entrepreneurs. Together, we work alongside strategic partners who share our commitment to enriching the global community's communication experience.

Our comprehensive catalog showcases an extensive range of cutting-edge products and services designed to meet the diverse needs of modern enterprises. Whether you're a small business looking to enhance your communication infrastructure or a large corporation in need of robust, scalable solutions, we have the expertise and technology to support your goals.

Explore our catalog to discover how Rayawave can empower your business with state of the art telecommunication solutions. Our dedicated team of experts is here to assist you in selecting the right products and services tailored to your unique requirements, ensuring a seamless and efficient communication experience. Welcome to the future of telecommunication.

Welcome to Rayawave

TABLE OF CONTENTS

RayaWaveRadio

4 RayaBox

RayaWave Adapters

8 Adapters

RayaWave Antenna

13 RW-C2505 HP

15 RW-C2705 HP

17 RW-C3005

19 RW-C3005 HP

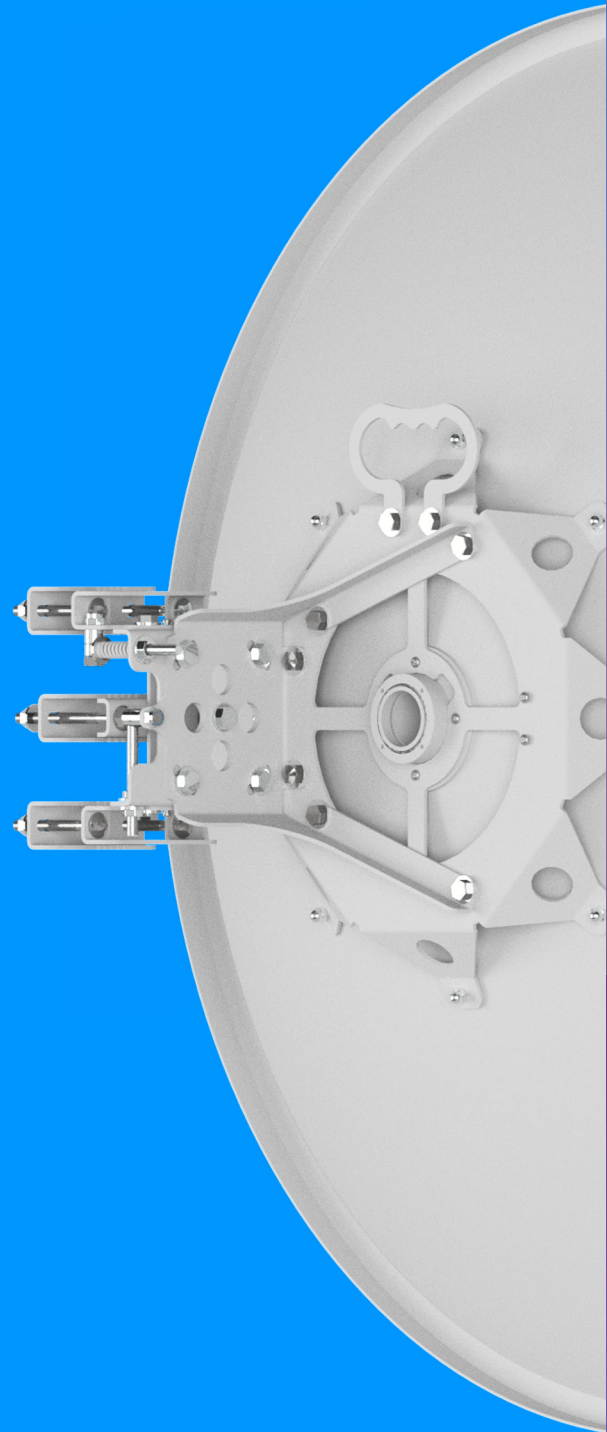
21 RW-C3205

23 RW-C3205 HP

25 RW-C3405

27 RW-C3405 HP

29 RW-C3605 HP






RAYAWAVE
Radio

RAYABOX

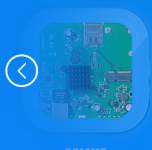
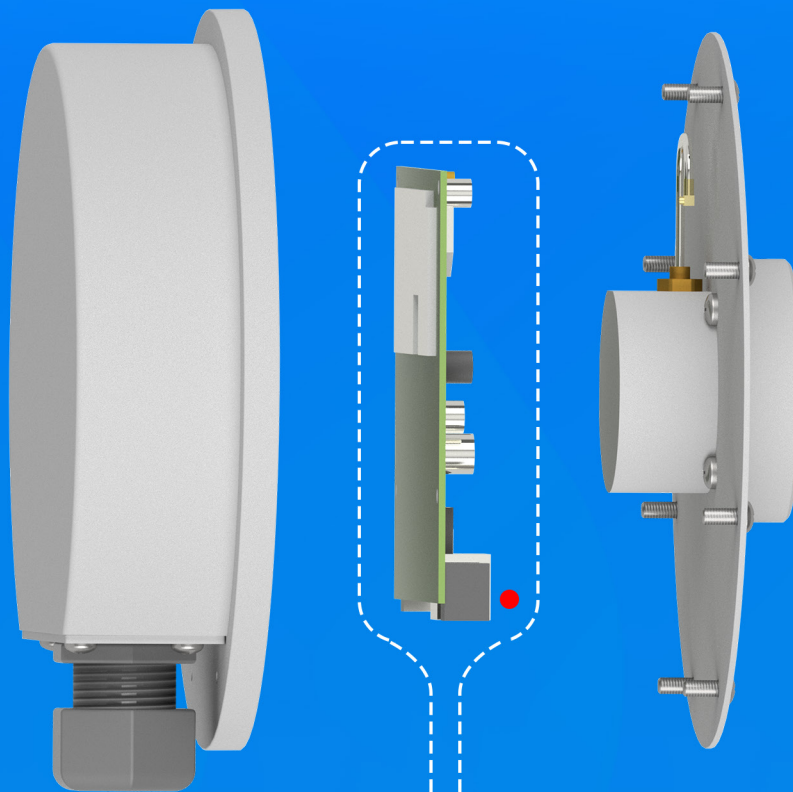
Rayawave Radio Specifications

Rayabox Radio Unit features the latest radio design, compatible with all RayaWave antennas. It uses Routerboards from the renowned and well-known brand  **MIKROTIK**, and after passing all field and operational tests, it is safe to say that our product can be used in frequency ranges of **4700 Mhz** to **6400 Mhz**.



RAYABOX

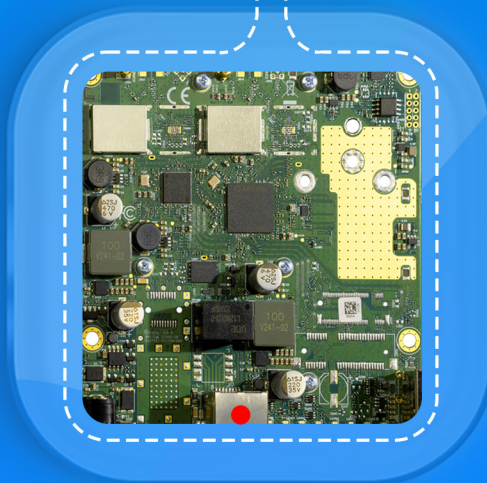
Rayawave Radio Specifications-cont'd



RBM11G



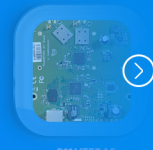
RB912UAG-5HPND



L11UG-5HAXD



911LITE5 DUAL



911LITE5AC

! RAYABOX IS COMPATIBLE WITH MOST MIKROTIK ROUTERBOARDS.

L11UG-5HAXD

RBM11G

RB911G-5HPND

RB912UAG-5HPND

RB912UAG-2HPND

RB922UAGS-5HPACD

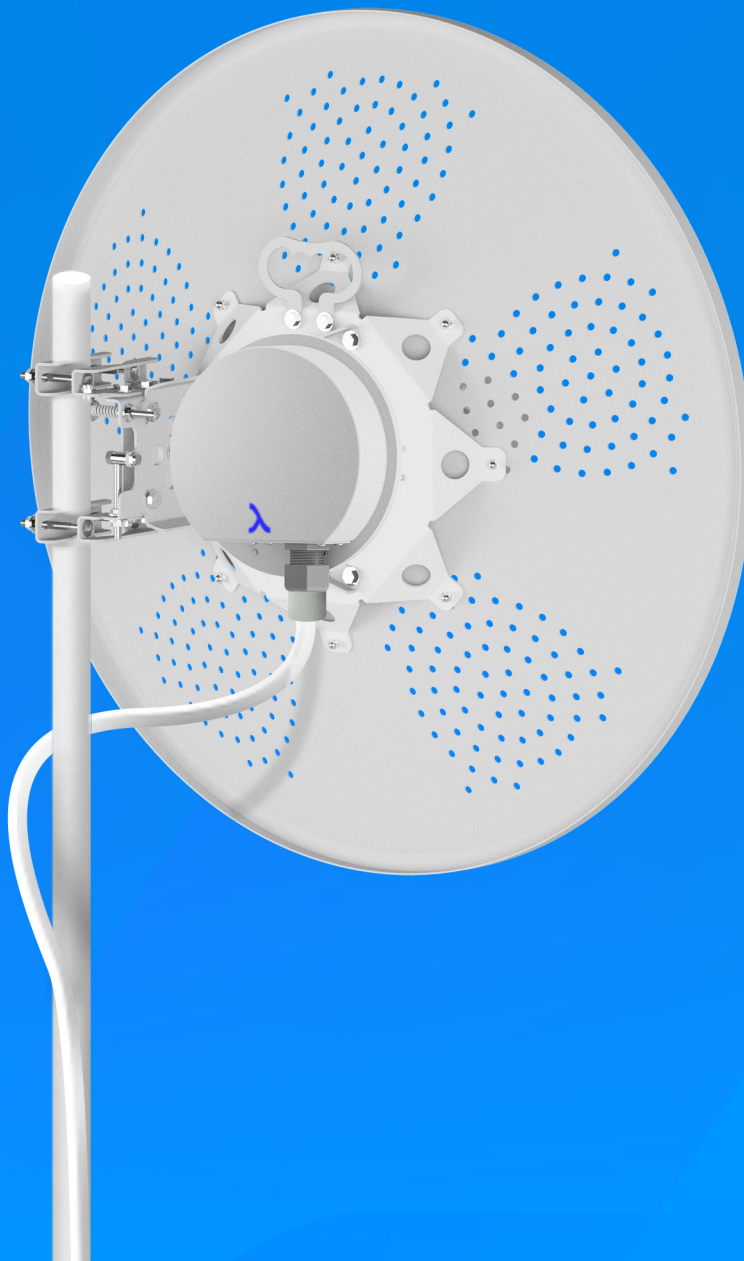
L23UGSR-5HAXD2HAXD

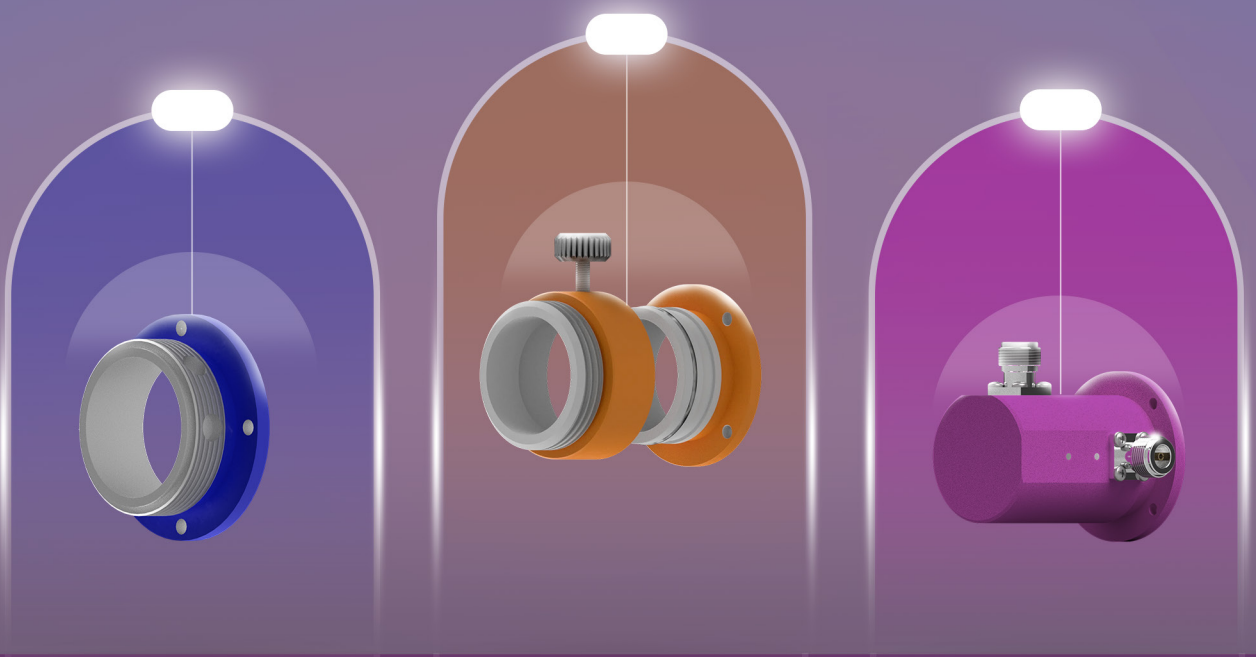
RAYABOX

Rayawave Radio Specifications-cont'd

SPEC SHEET

ANTENNA CONNECTION	RAYABOX TWIST ADAPTER WAVEGUIDE PORT
MATERIALS	ALUMINUM ALLOY
ROUTER BOARD CONNECTION	2X RIGHT ANGLE MMCX ON RG402 CABLE
TEMPERATURE	-40°C TO +60°C (-40°F TO +140°F)
WIND SURVIVAL	160 Km/h
WEIGHT	0.55 Kg / 1.2 Lbs – single unit
RETAIL BOX	18.9 × 18.0 × 6.6 Cm
PACKING BOX	92.0 × 38.0 × 22.0 Cm
INGRESS PROTECTION	IP66
FREQUENCY RANGE	4700Mhz - 6400Mhz





RAYAWAVE
Adapters

Adapters

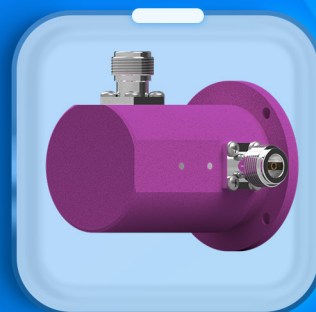
TwistPort Adapters



RayaBox Adapter



Mimosa Adapter



Standard Adapter



Adapters

TwistPort Adapter - cont'd

Rayawave antennas are designed for seamless integration with most radios available on the market. Each antenna comes with set of adapters and mount kits included in the product box, ensuring compatibility and easy installation.

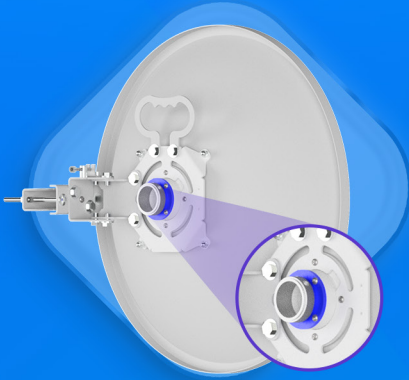


Dedicated mount kits have been designed for Mikrotik and Mimosa brands to facilitate the installation of radios on the back of Rayawave antennas.

Adapters

TwistPort Adapter cont'd

Raya Adapter

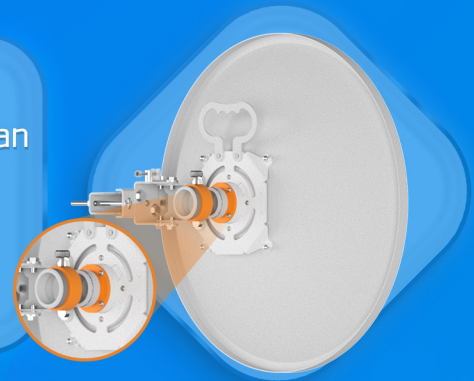


Using the Raya adapter , Rayawave radios can be easily connected to Rayawave antennas without any cable connections .

1

X Adapter

Using the X adapter from Rayawave, Mimosa X series can be easily connected to Rayawave antennas without any cable connections.

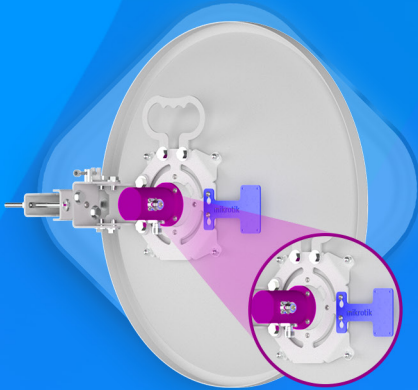


2

N-type Adapter

MikroTik Mount Kit

Using the N-type adapter from Rayawave and the mount kit provided in the product box, you can easily connect all MikroTik radios that support N-type ports to Rayawave antennas with optimal performance.

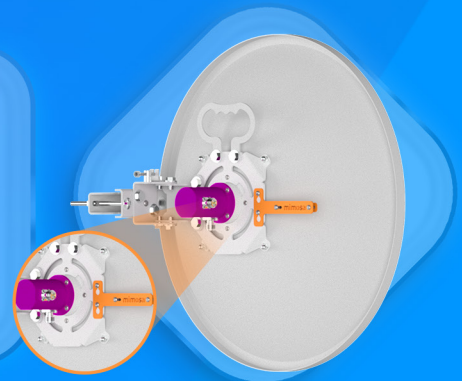


3

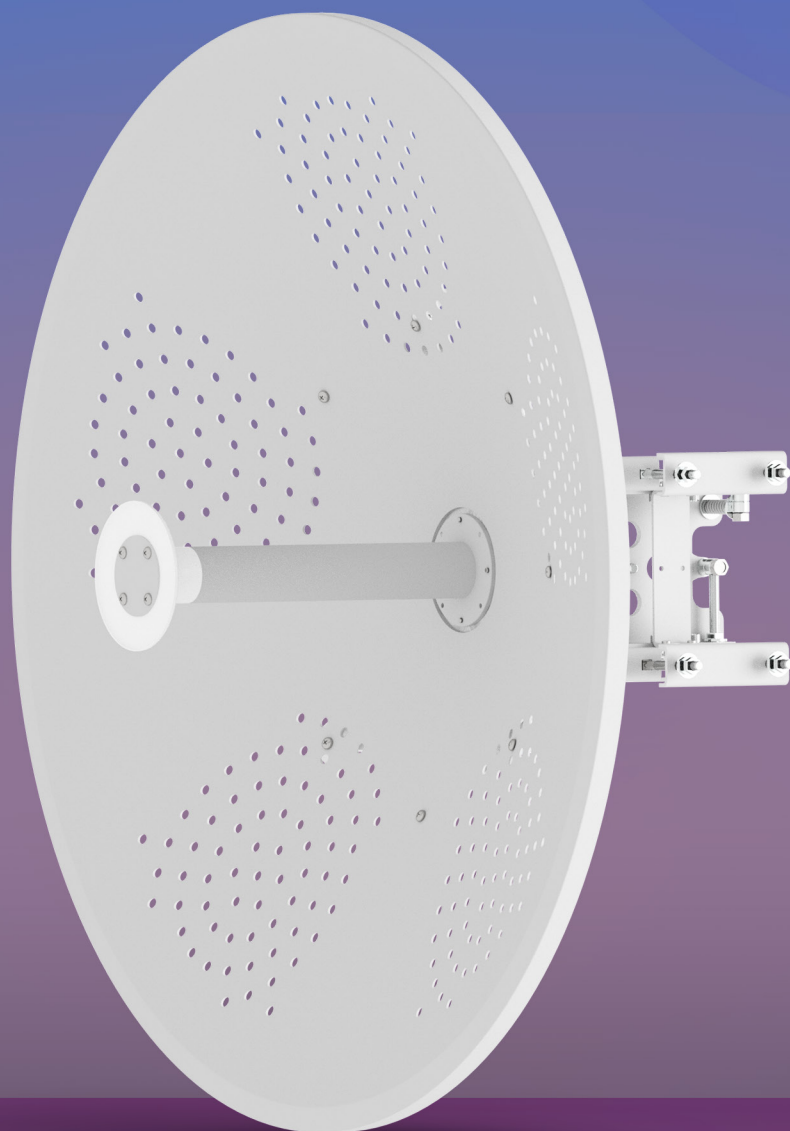
N-type Adapter

Mimosa Mount Kit

Using the N-type adapter from Rayawave and the mount kit provided in the product box, you can easily connect all Mimosa radios that support N-type ports to Rayawave antennas with optimal performance.



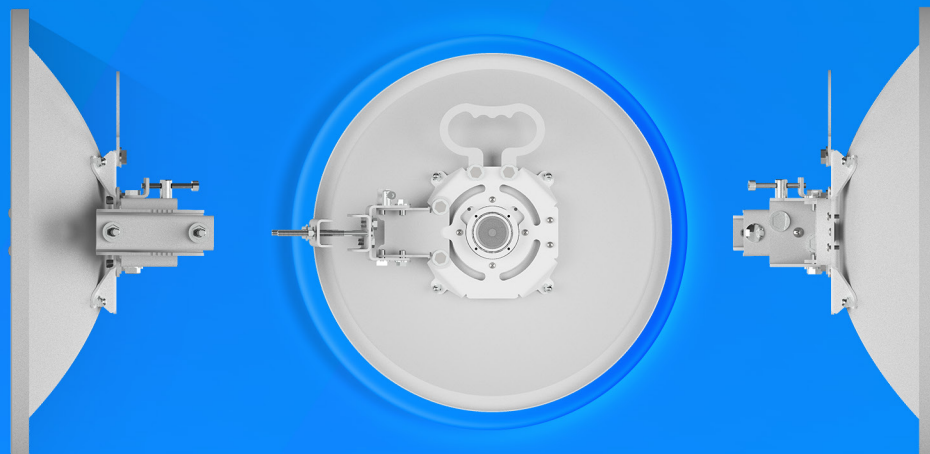
4



RAYAWAVE
Antennas

RW-C2505 HP

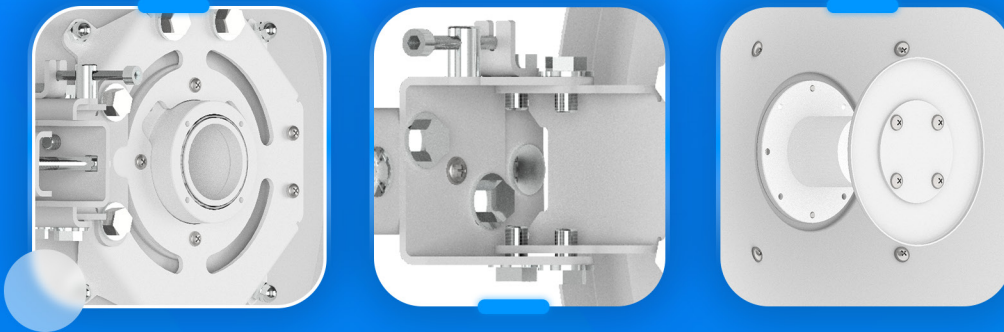
Raywave Antenna Specifications



C2505 HP

RW-C2505 HP

Raywave Antenna Specifications



• **Product Model**

RW-C2505 HP

• **Antenna Type**

Parabolic Solid Dish Antenna

• **Frequency Range**

4.7 - 6.4 Ghz

• **Impedance**

50 Ω

• **Polarization**

Vertical and Horizontal

• **Antenna Gain**

25dBi

• **Waight**

net: 2800 gr

• **S.W.R in Bandwidth**

<1.4:1(TyP)

• **Single Unit Dimension**

430 × 430 × 300mm

• **Oprrating Temperature**

-40C° to +80C°

• **Wind Resistance**

200/150 km/h

• **H/E plan beamwidth**

7.5 degree

• **Connector Type**

2x Ntype-Female RP Connectors

• **Mechanical Pan/Tilt**

±15°

• **Max/Min Gain**

in 6400Mhz(26.4dBi) & in 4700Mhz(23.7dBi)

• **Front to Back Ratio**

≥43dB

• **ETSI Specification**

EN 302 326 DN2-DN5

• **Mounting Kit Style**

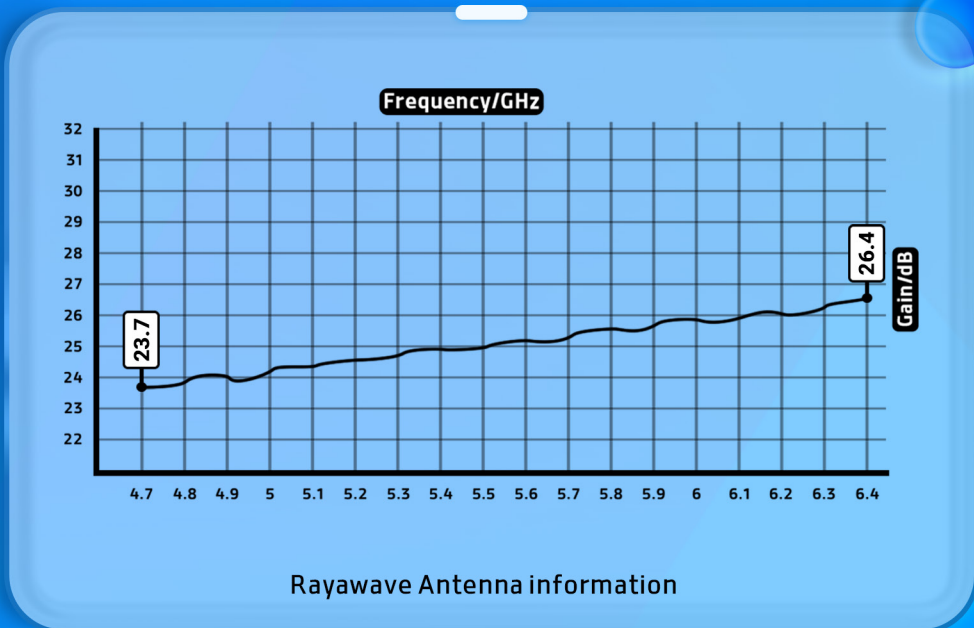
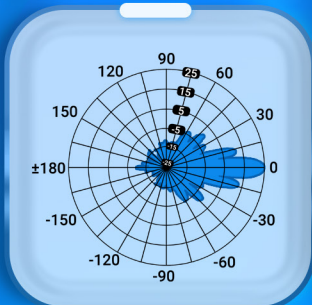
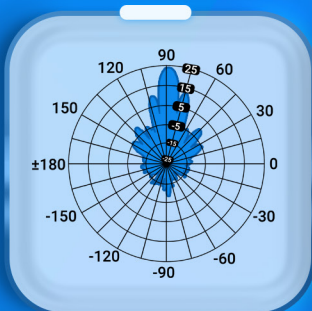
Easy Mount Kit

• **Materials**

Aluminium alloy and UV Resistant polymer

• **F/D Ratio**

0.25



Raywave Antenna information

RW-C2705 HP

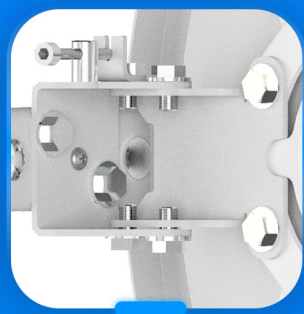
Raywave Antenna Specifications



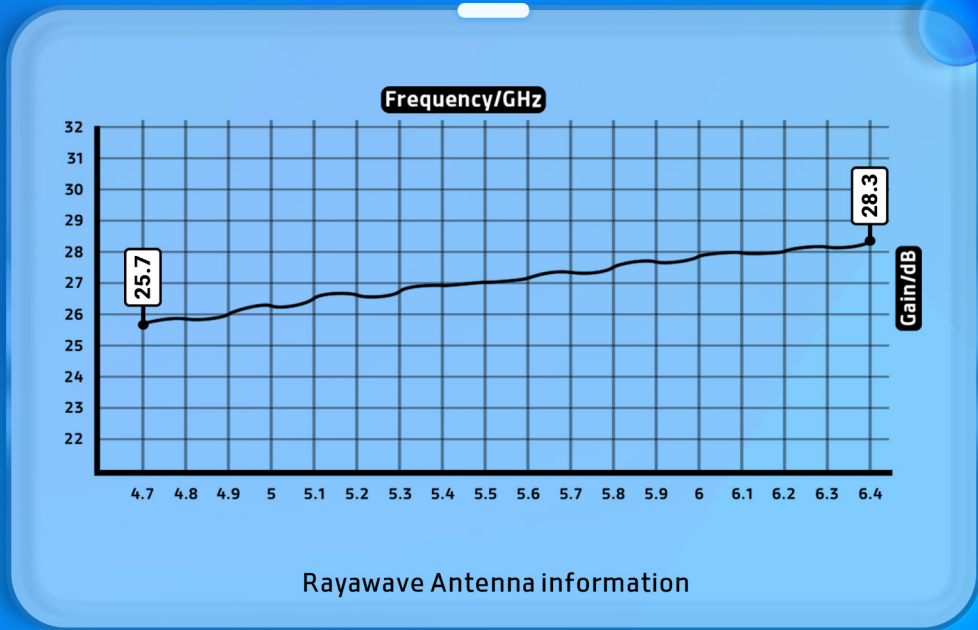
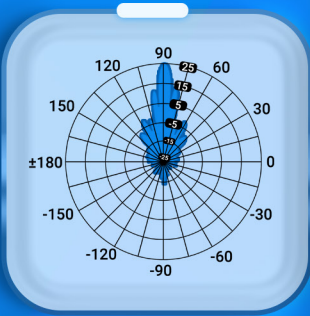
C2705 HP

RW-C2705 HP

Raywave Antenna Specifications-cont'd



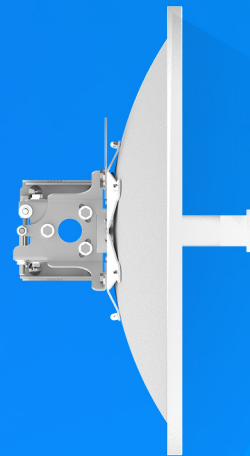
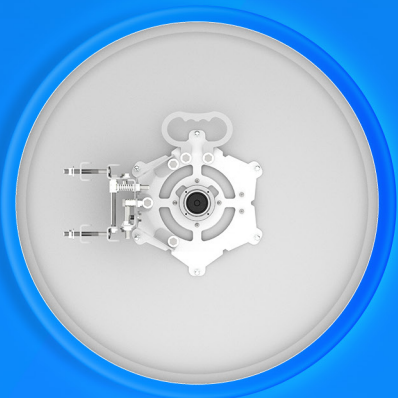
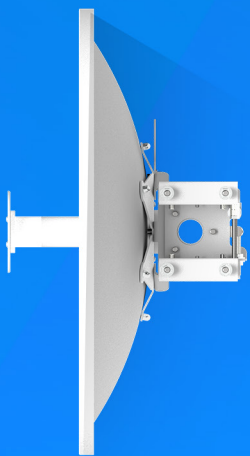
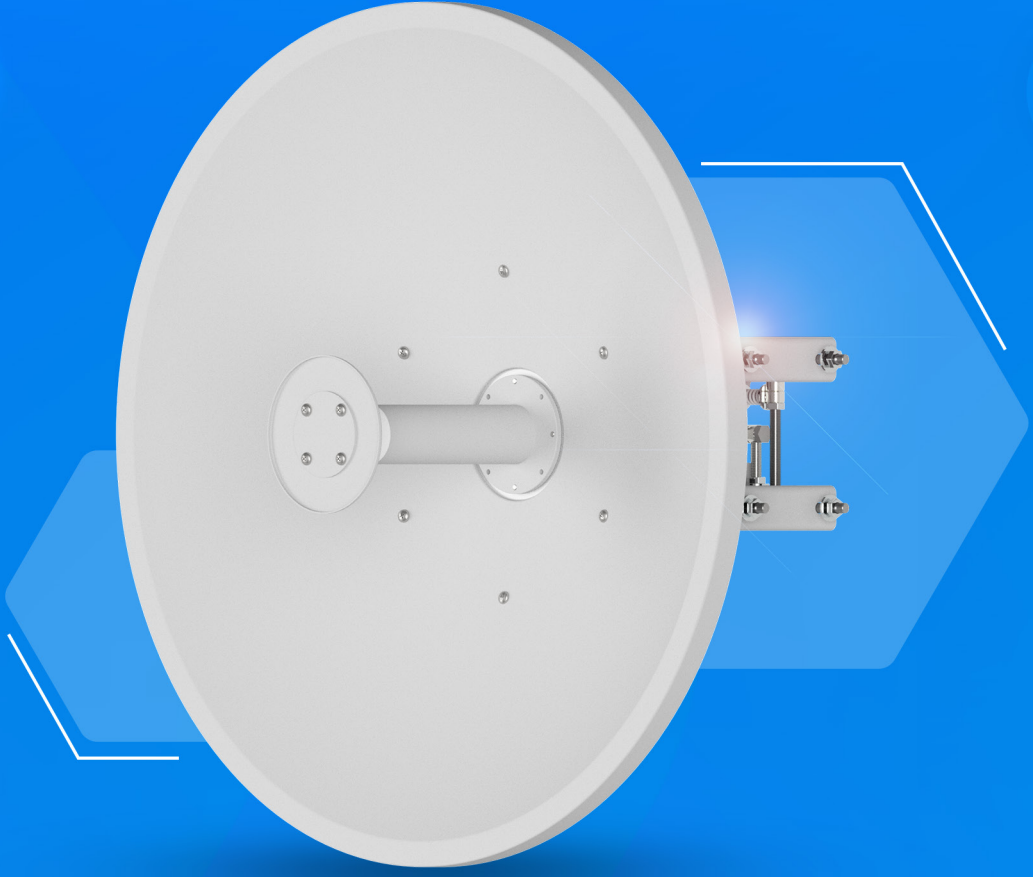
- ◆ **Product Model**
RW-C2705 HP
- ◆ **Antenna Type**
Parabolic Solid Dish Antenna
- ◆ **Frequency Range**
4.7 - 6.4 Ghz
- ◆ **Impedance**
50 Ω
- ◆ **Polarization**
Vertical and Horizontal
- ◆ **Antenna Gain**
27dBi
- ◆ **Waight**
net: 3200 gr
- ◆ **S.W.R in Bandwidth**
<1.4:1(TyP)
- ◆ **Single Unit Dimension**
530 × 530 × 320mm
- ◆ **Oprrating Temperature**
-40C° to +80C°
- ◆ **Wind Resistance**
200/150 km/h
- ◆ **H/E plan beamwidth**
6.1 degree
- ◆ **Connector Type**
2x Ntype-Female RP Connectors
- ◆ **Mechanical Pan/Tilt**
±15°
- ◆ **Max/Min Gain**
in 6400Mhz(28.3dBi) & in 4700Mhz(25.7dBi)
- ◆ **Front to Back Ratio**
≥46dB
- ◆ **ETSI Specification**
EN 302 326 DN2-DN5
- ◆ **Mounting Kit Style**
Easy Mount Kit
- ◆ **Materials**
Aluminium alloy and UV Resistant polymer
- ◆ **F/D Ratio**
0.25



Raywave Antenna information

RW-C3005

Raywave Antenna Specifications



C300

RW-C3005

Raywave Antenna Specifications-cont'd



◆ **Product Model**

RW-C3005

◆ **Antenna Type**

Parabolic Solid Dish Antenna

◆ **Frequency Range**

4.7 - 6.4 Ghz

◆ **Impedance**

50 Ω

◆ **Polarization**

Vertical and Horizontal

◆ **Antenna Gain**

30dBi

◆ **Waight**

net: 5300 gr

◆ **S.W.R in Bandwidth**

<1.4:1(TyP)

◆ **Single Unit Dimension**

650 × 650 × 380mm

◆ **Oprrating Temperature**

-40C° to +80C°

◆ **Wind Resistance**

200/150 km/h

◆ **H/E plan beamwidth**

5 degree

◆ **Connector Type**

2x Ntype-Female RP Connectors

◆ **Mechanical Pan/Tilt**

±15°

◆ **Max/Min Gain**

in 6400Mhz(31dBi) & in 4700Mhz(28.3dBi)

◆ **Front to Back Ratio**

≥40dB

◆ **ETSI Specification**

EN 302 326 DN2-DN5

◆ **Mounting Kit Style**

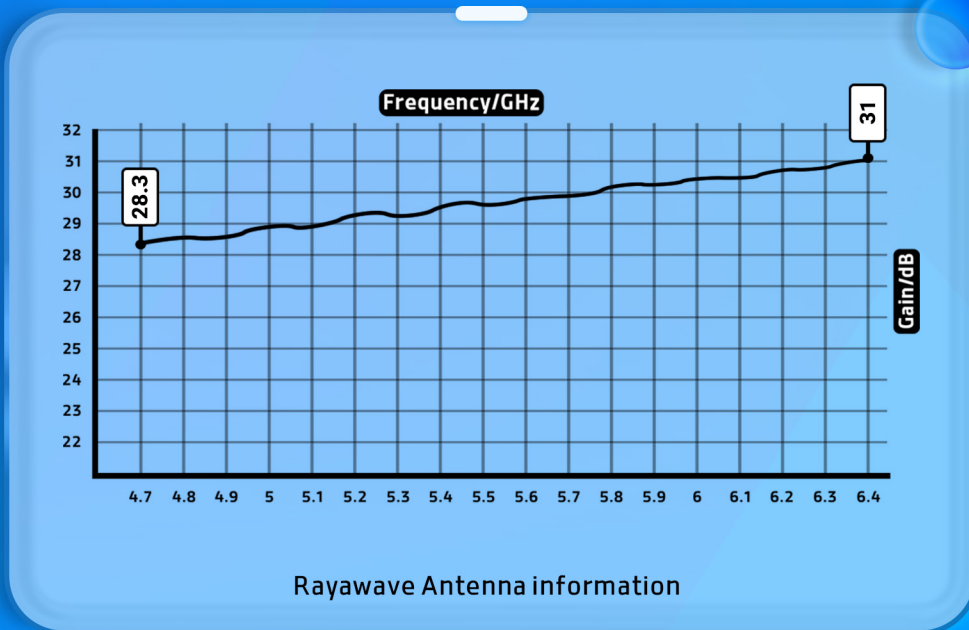
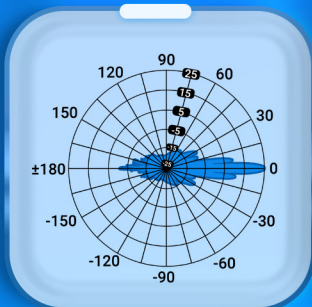
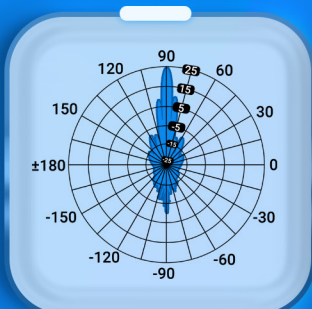
Easy Mount Kit

◆ **Materials**

Aluminium alloy and UV Resistant polimer

◆ **F/D Ratio**

0.36



Raywave Antenna information

RW-C3005 HP

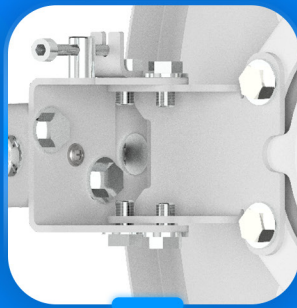
Rayawave Antenna Specifications



C3005 HP

RW-C3005 HP

Raywave Antenna Specifications-cont'd



Product Model

RW-C3005 HP

Antenna Type

Parabolic Solid Dish Antenna

Frequency Range

4.7 - 6.4 Ghz

Impedance

50 Ω

Polarization

Vertical and Horizontal

Antenna Gain

30dBi

Waight

net: 5900gr

S.W.R in Bandwidth

<1.4:1(TyP)

Single Unit Dimension

670 × 670 × 335

Oprrating Temperature

-40C° to +80C°

Wind Resistance

200/150 km/h

H/E plan beamwidth

4.8 degree

Connector Type

2x Ntype-Female RP Connectors

Mechanical Pan/Tilt

±15°

Max/Min Gain

in 6400Mhz(30.9dBi) & in 4700Mhz(28.3dBi)

Front to Back Ratio

≥40dB

ETSI Specification

EN 302 326 DN2-DN5

Mounting Kit Style

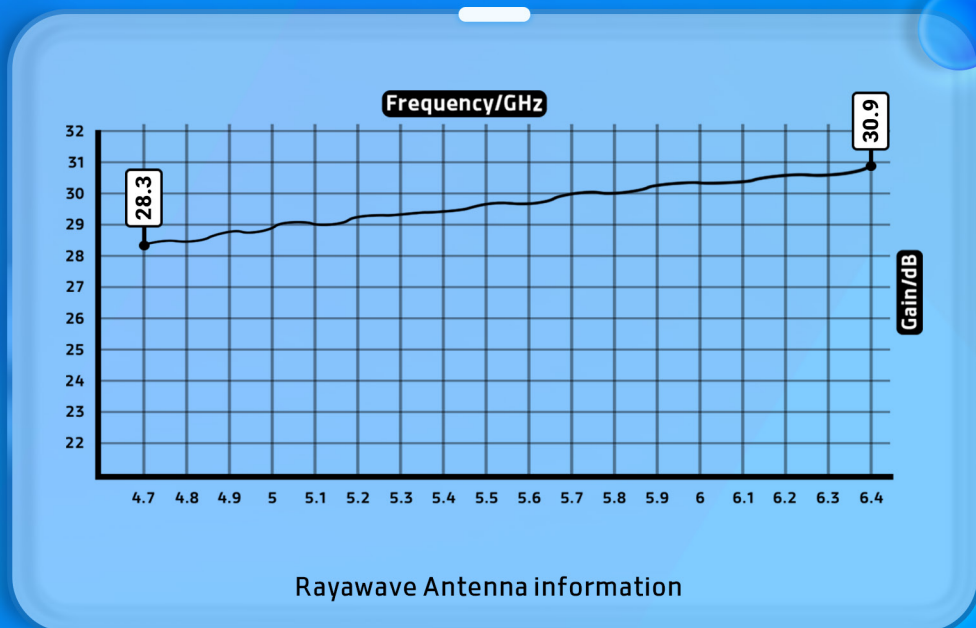
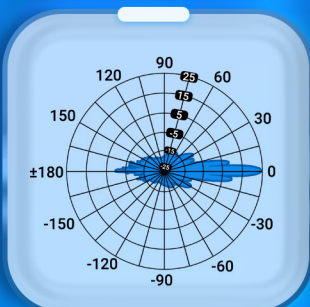
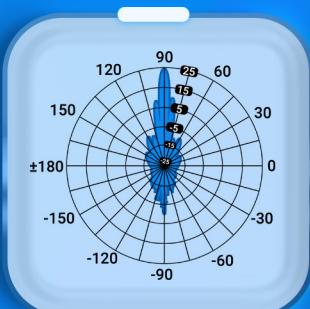
Easy Mount Kit

Materials

Aluminium alloy and UV Resistant polimer

F/D Ratio

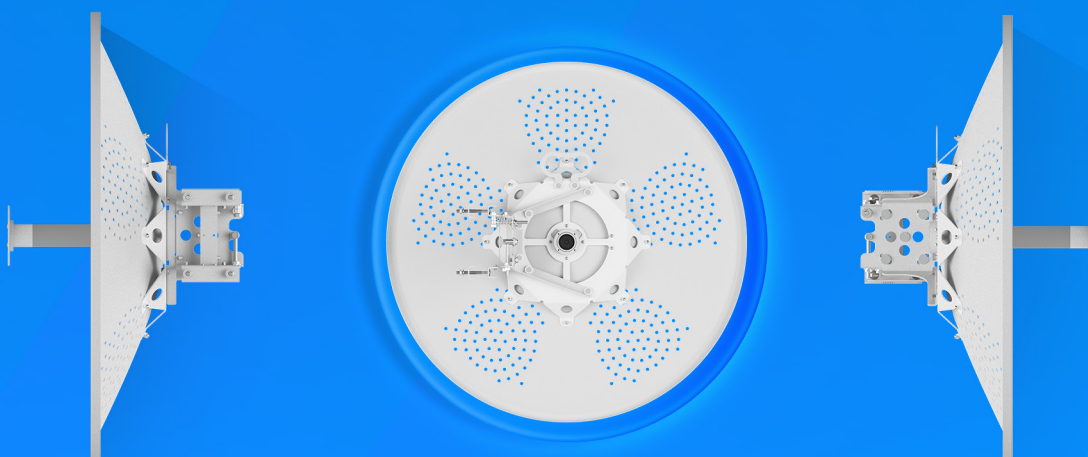
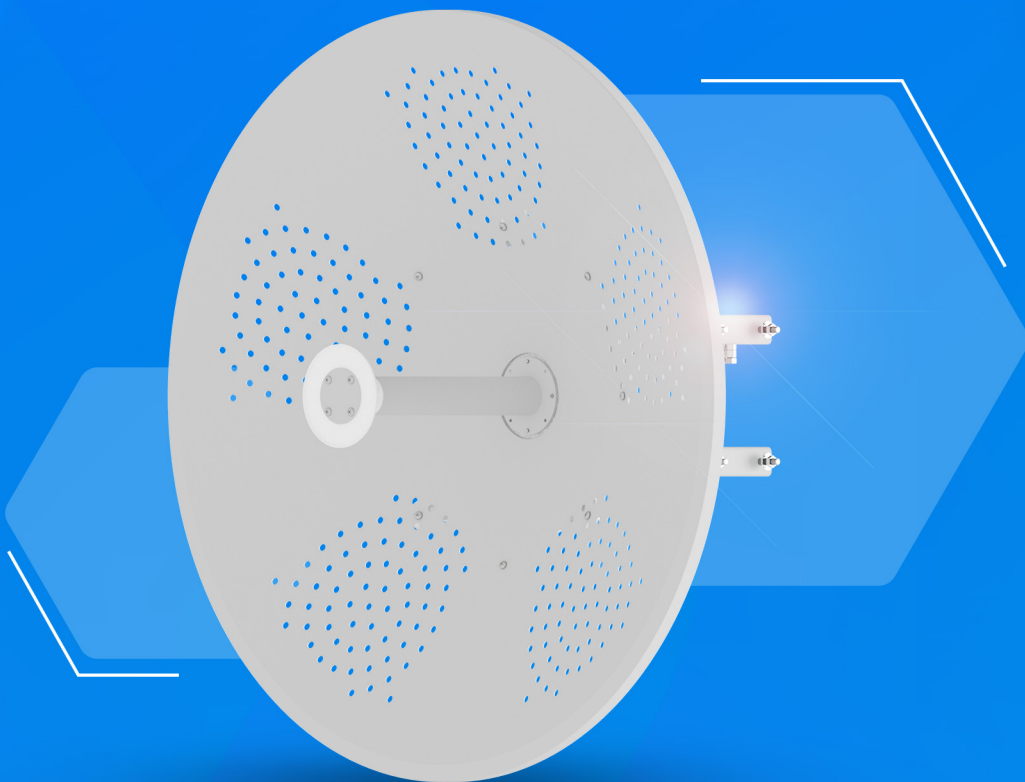
0.25



Raywave Antenna information

RW-C3205

Raywave Antenna Specifications



C320

RW-C3205

Raywave Antenna Specifications-cont'd



Product Model

RW-C3205

Antenna Type

Parabolic Solid Dish Antenna

Frequency Range

4.7 - 6.4 Ghz

Impedance

50 Ω

Polarization

Vertical and Horizontal

Antenna Gain

32dBi

Waight

net: 9800gr

S.W.R in Bandwidth

<1.4:1(TyP)

Single Unit Dimension

890 × 890 × 508mm

Oprrating Temperature

-40C° to +80C°

Wind Resistance

200/150 km/h

H/E plan beamwidth

3.6 degree

Connector Type

2x Ntype-Female RP Connectors

Mechanical Pan/Tilt

±15°

Max/Min Gain

in 6400Mhz(33dBi) & in 4700Mhz(30.4dBi)

Front to Back Ratio

≥54dB

ETSI Specification

EN 302 326 DN2-DN5

Mounting Kit Style

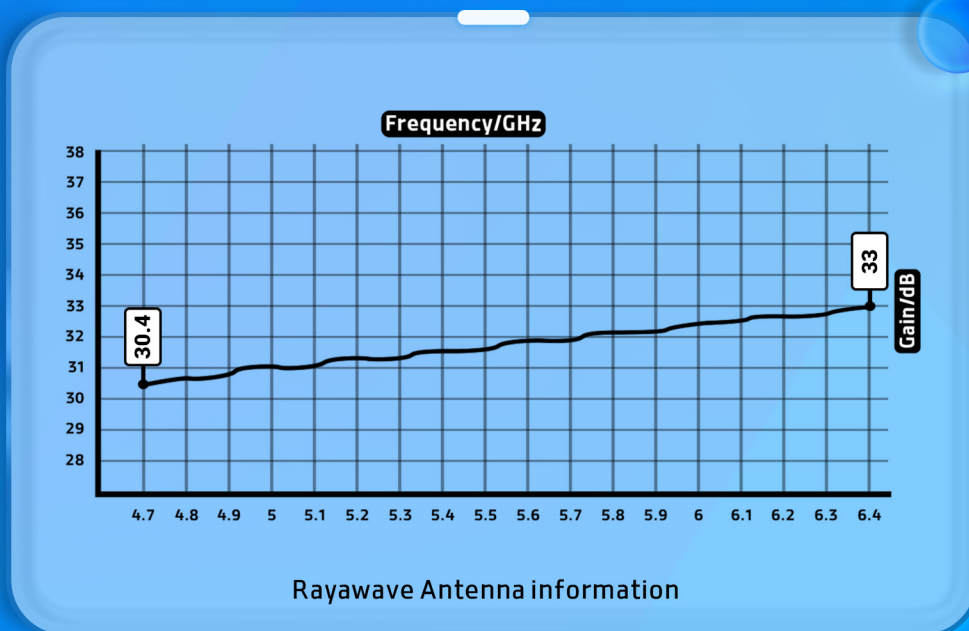
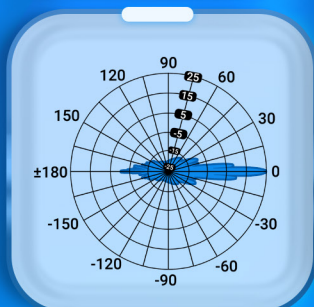
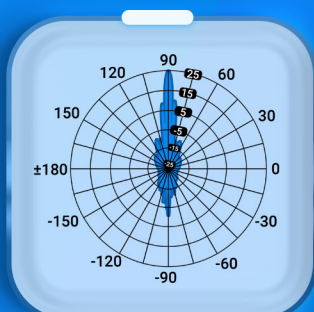
Easy Mount Kit

Materials

Aluminium alloy and UV Resistant polymer

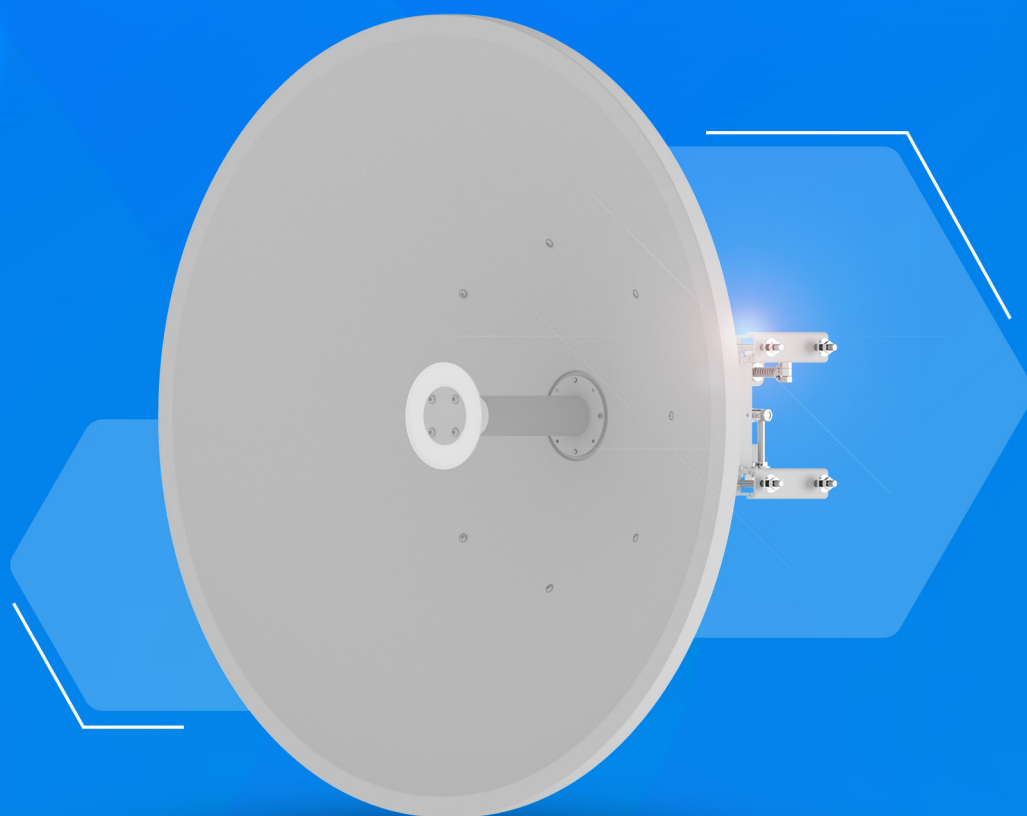
F/D Ratio

0.36



RW-C3205 HP

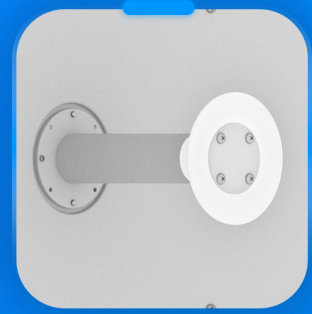
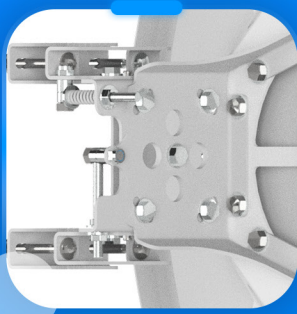
Raywave Antenna Specifications



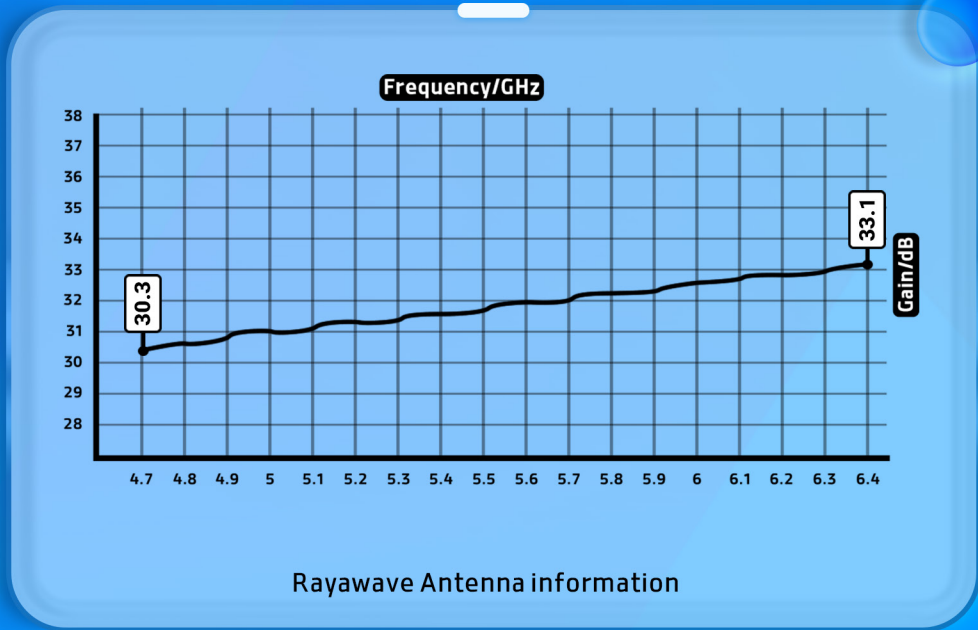
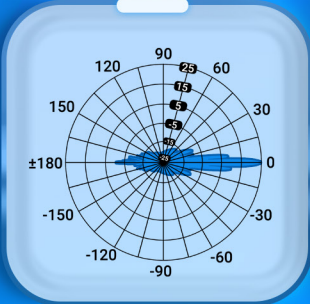
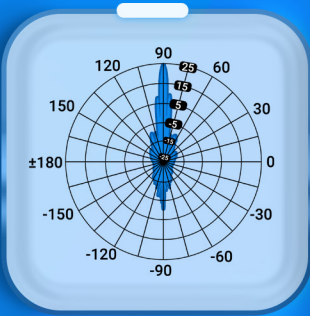
C3205H

RW-C3205 HP

Raywave Antenna Specifications-cont'd



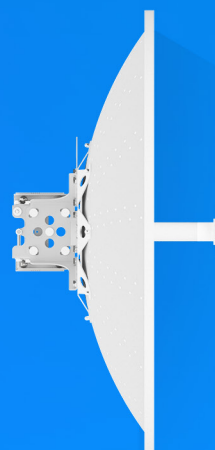
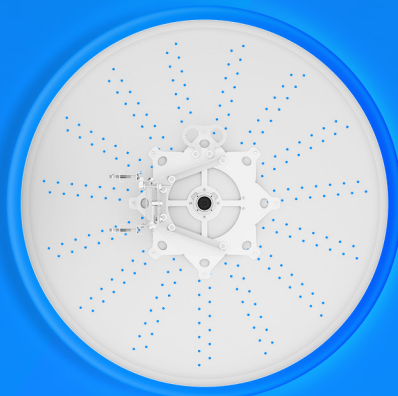
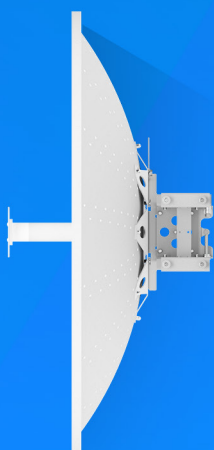
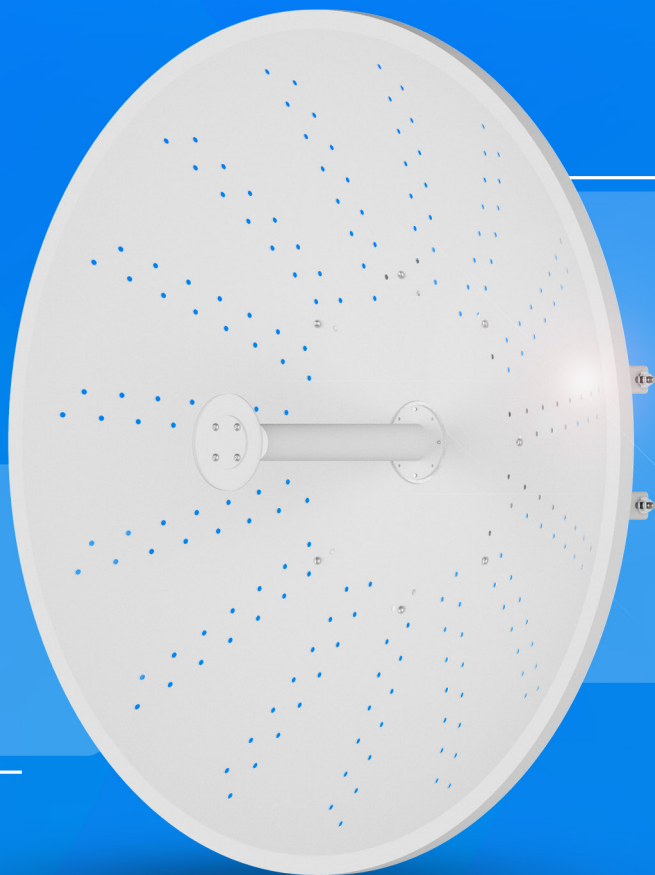
- ◆ **Product Model**
RW-C3205 HP
- ◆ **Antenna Type**
Parabolic Solid Dish Antenna
- ◆ **Frequency Range**
4.7 - 6.4 Ghz
- ◆ **Impedance**
50 Ω
- ◆ **Polarization**
Vertical and Horizontal
- ◆ **Antenna Gain**
32dBi
- ◆ **Waight**
net: 9800 gr
- ◆ **S.W.R in Bandwidth**
<1.4:1(TyP)
- ◆ **Single Unit Dimension**
895 × 895 × 420
- ◆ **Oprating Temperature**
-40C° to +80C°
- ◆ **Wind Resistance**
200/150 km/h
- ◆ **H/E plan beamwidth**
3.6 degree
- ◆ **Connector Type**
2x Ntype-Female RP Connectors
- ◆ **Mechanical Pan/Tilt**
±15°
- ◆ **Max/Min Gain**
in 6400Mhz(33.1dBi) & in 4700Mhz(30.3dBi)
- ◆ **Front to Back Ratio**
≥43dB
- ◆ **ETSI Specification**
EN 302 326 DN2-DN5
- ◆ **Mounting Kit Style**
Easy Mount Kit
- ◆ **Materials**
Aluminium alloy and UV Resistant polymer
- ◆ **F/D Ratio**
0.25



Raywave Antenna information

RW-C3405

Raywave Antenna Specifications



C340

RW-C3405

Raywave Antenna Specifications-cont'd



Product Model

RW-C3405

Antenna Type

Parabolic Solid Dish Antenna

Frequency Range

4.7 - 6.4 Ghz

Impedance

50 Ω

Polarization

Vertical and Horizontal

Antenna Gain

34dBi

Waight

net: 11200 gr

S.W.R in Bandwidth

<1.4:1(TyP)

Single Unit Dimension

1050 × 1050 × 525 mm

Oprrating Temperature

-40C° to +80C°

Wind Resistance

200/150 km/h

H/E plan beamwidth

3.1 degree

Connector Type

2x Ntype-Female RP Connectors

Mechanical Pan/Tilt

±15°

Max/Min Gain

in 6400Mhz(34.8dBi) & in 4700Mhz(32dBi)

Front to Back Ratio

≥56dB

ETSI Specification

EN 302 326 DN2-DN5

Mounting Kit Style

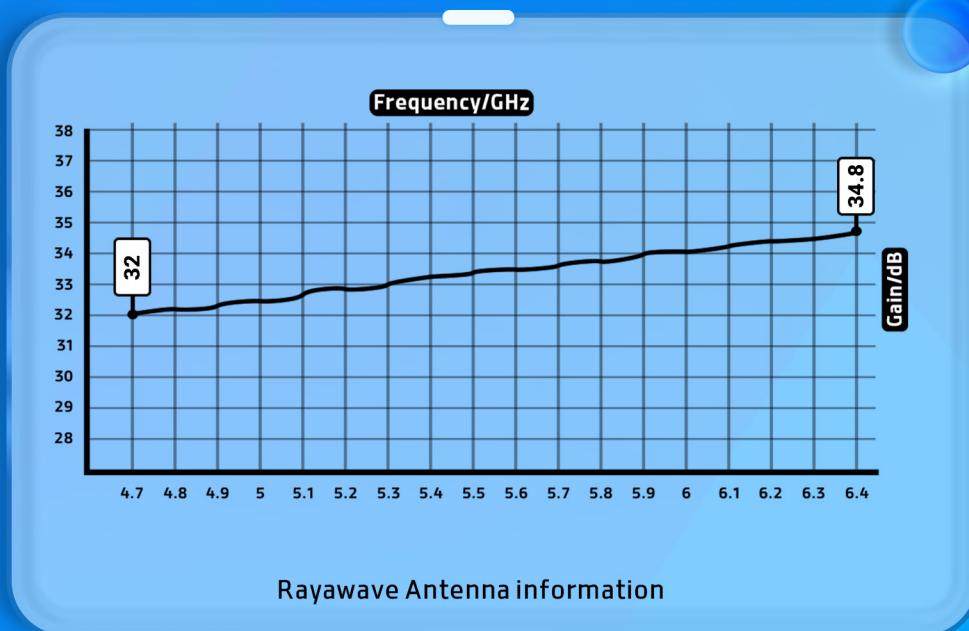
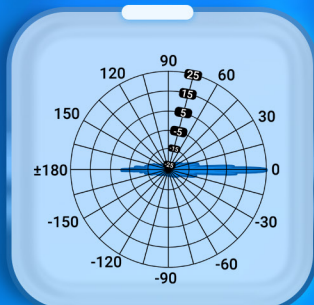
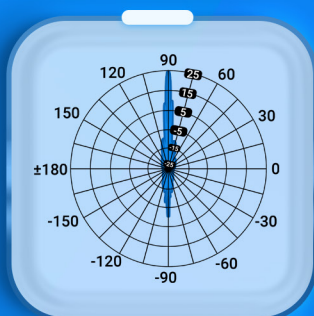
Easy Mount Kit

Materials

Aluminium alloy and UV Resistant polymer

F/D Ratio

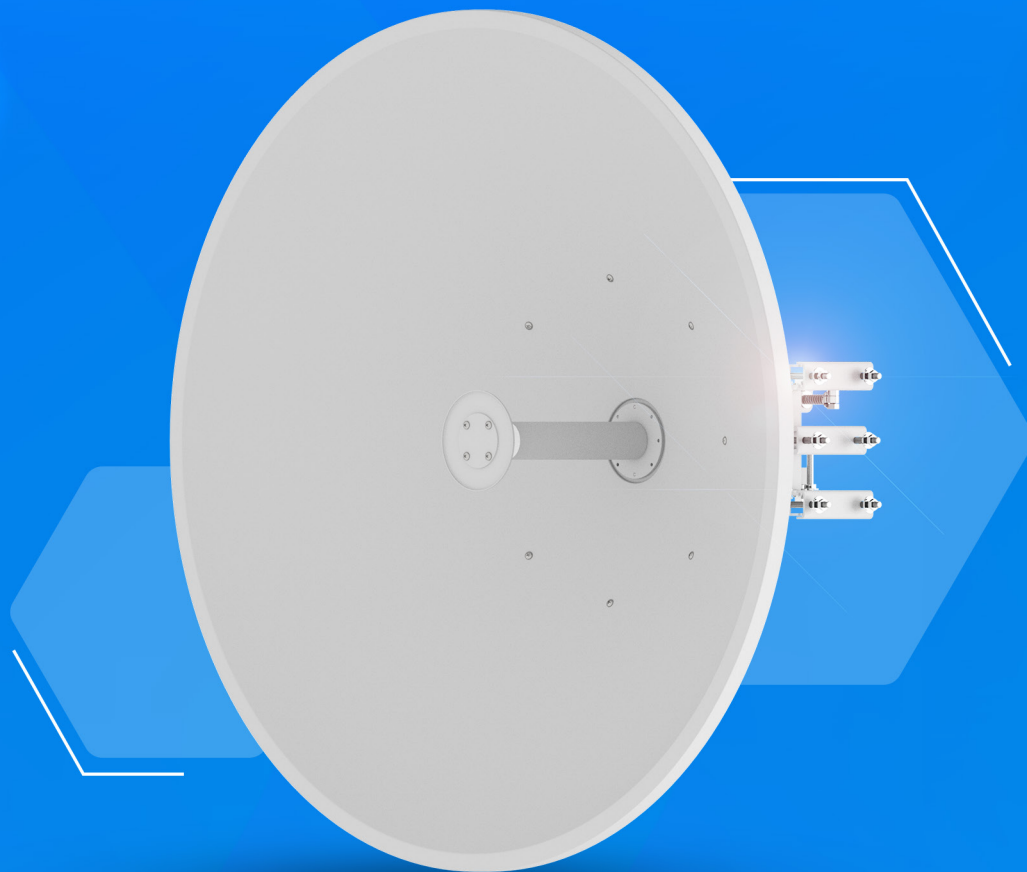
0.36



Raywave Antenna information

RW-C3405 HP

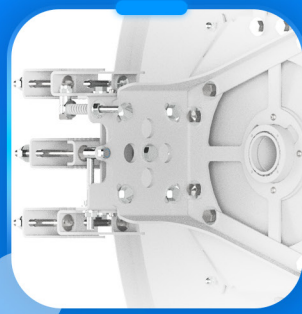
Raywave Antenna Specifications



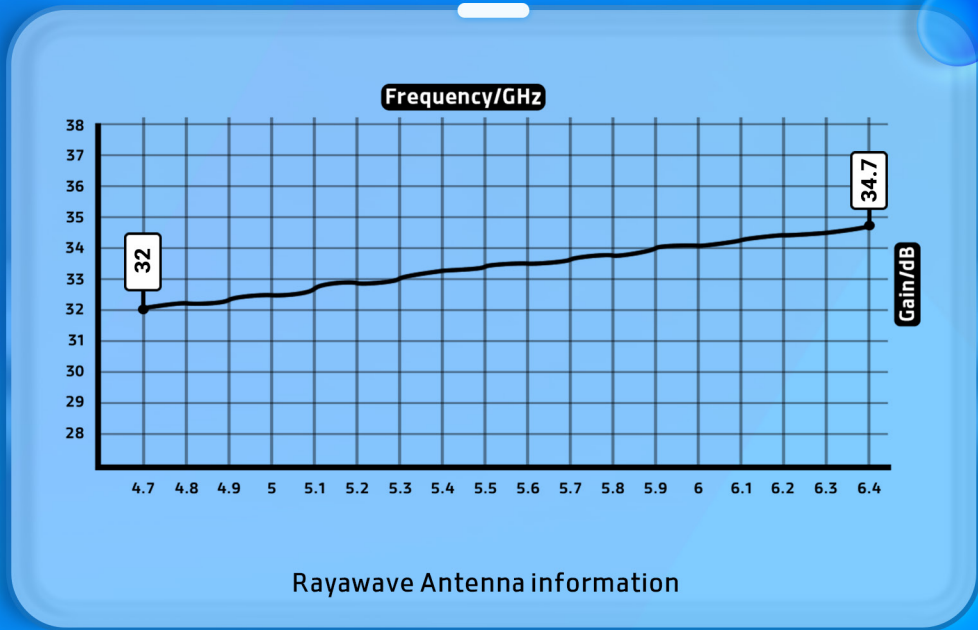
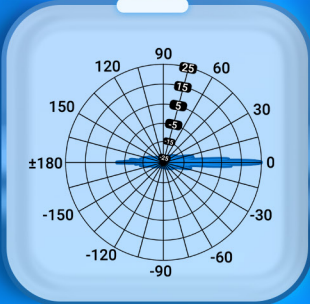
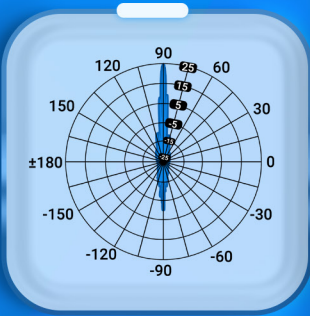
C3405H

RW-C3405 HP

Raywave Antenna Specifications-cont'd



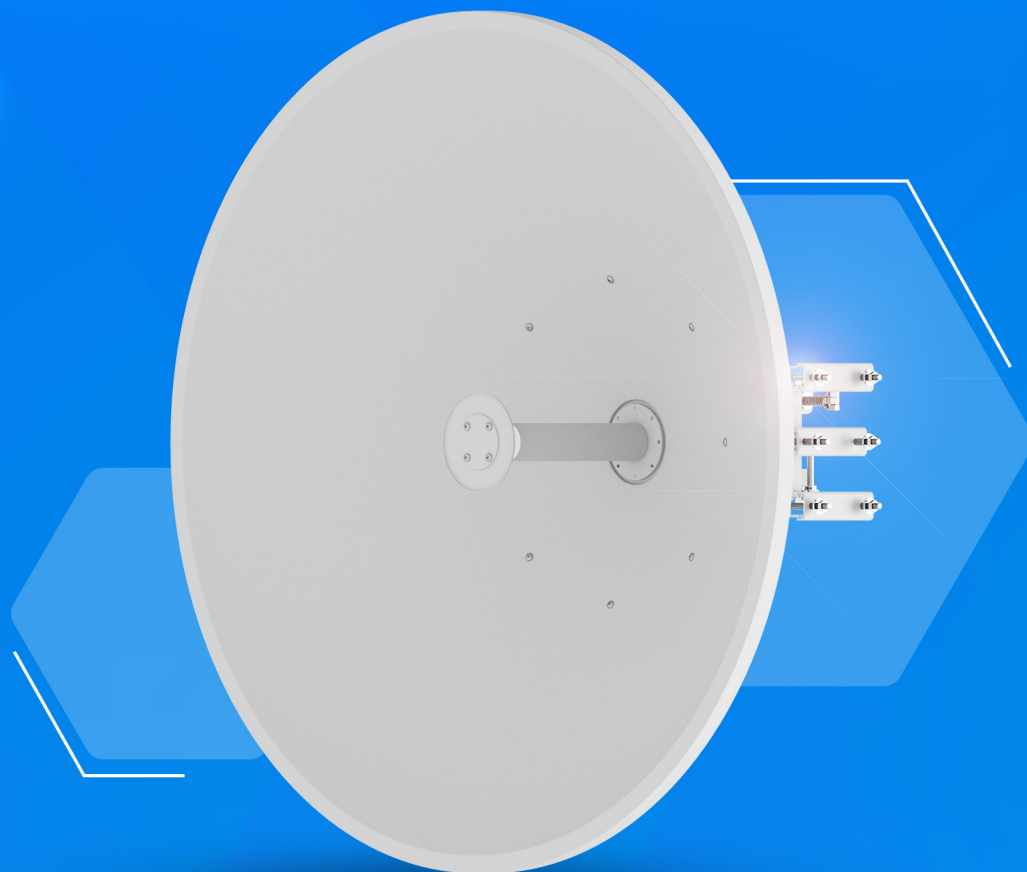
- ◆ **Product Model**
RW-C3405 HP
- ◆ **Antenna Type**
Parabolic Solid Dish Antenna
- ◆ **Frequency Range**
4.7 - 6.4 Ghz
- ◆ **Impedance**
50 Ω
- ◆ **Polarization**
Vertical and Horizontal
- ◆ **Antenna Gain**
34dBi
- ◆ **Waight**
net: 13500 gr
- ◆ **S.W.R in Bandwidth**
<1.4:1(TyP)
- ◆ **Single Unit Dimension**
1027 × 1027 × 427mm
- ◆ **Oprrating Temperature**
-40C° to +80C°
- ◆ **Wind Resistance**
200/150 km/h
- ◆ **H/E plan beamwidth**
3.1 degree
- ◆ **Connector Type**
2x Ntype-Female RP Connectors
- ◆ **Mechanical Pan/Tilt**
±15°
- ◆ **Max/Min Gain**
in 6400Mhz(34.7dBi) & in 4700Mhz(32dBi)
- ◆ **Front to Back Ratio**
≥56dB
- ◆ **ETSI Specification**
EN 302 326 DN2-DN5
- ◆ **Mounting Kit Style**
Easy Mount Kit
- ◆ **Materials**
Aluminium alloy and UV Resistant polymer
- ◆ **F/D Ratio**
0.25



Raywave Antenna information

RW-C3605 HP

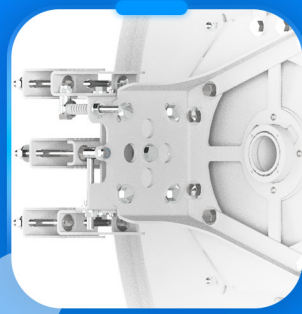
Rayawave Antenna Specifications



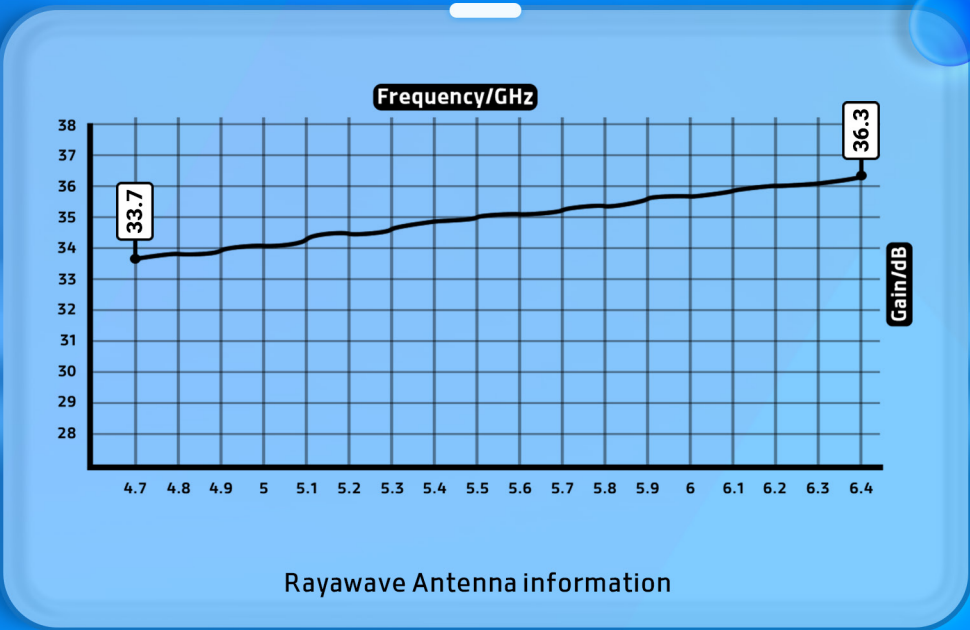
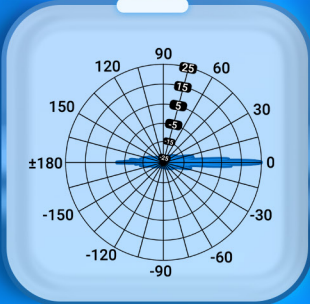
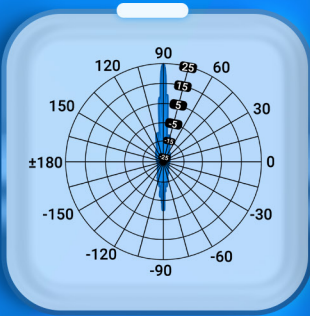
C3605H

RW-C3605 HP

Raywave Antenna Specifications-cont'd



- ◆ **Product Model**
RW-C3605 HP
- ◆ **Antenna Type**
Parabolic Solid Dish Antenna
- ◆ **Frequency Range**
4.7 - 6.4 Ghz
- ◆ **Impedance**
50 Ω
- ◆ **Polarization**
Vertical and Horizontal
- ◆ **Antenna Gain**
36dBi
- ◆ **Waight**
net: 14200 gr
- ◆ **S.W.R in Bandwidth**
<1.4:1(TyP)
- ◆ **Single Unit Dimension**
1250 × 1250 × 470mm
- ◆ **Oprrating Temperature**
-40C° to +80C°
- ◆ **Wind Resistance**
200/150 km/h
- ◆ **H/E plan beamwidth**
2.6 degree
- ◆ **Connector Type**
2x Ntype-Female RP Connectors
- ◆ **Mechanical Pan/Tilt**
±15°
- ◆ **Max/Min Gain**
in 6400Mhz(36.3dBi) & in 4700Mhz(33.7dBi)
- ◆ **Front to Back Ratio**
≥57dB
- ◆ **ETSI Specification**
EN 302 326 DN2-DN5
- ◆ **Mounting Kit Style**
Easy Mount Kit
- ◆ **Materials**
Aluminium alloy and UV Resistant polimer
- ◆ **F/D Ratio**
0.25



Raywave Antenna information



www.Rayawave.com



info@Rayawave.com



1509, The Binary
Marasi Drive Business BayPO
Box 418417 • Dubai • UAE

Rayawave
stayconnected